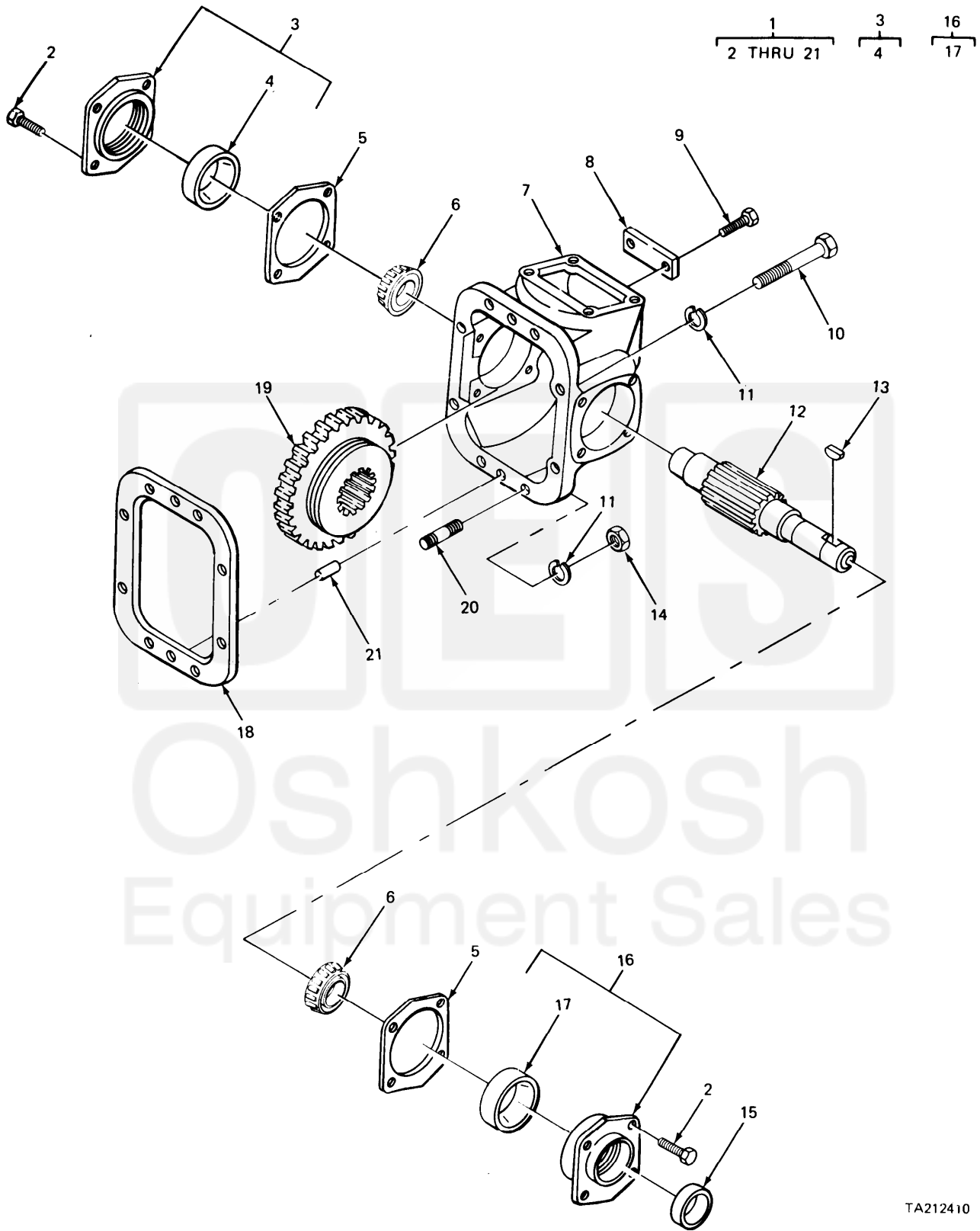


SECTION II

TM 9-2320-270-34P



TA212410

FIGURE 284. POWER TAKE OFF WINCH ASSEMBLY.

Current part is item (15) on diagram. Available at www.oshkoshequipment.com

SECTION II				TM9-2320-270-34P		
(1)	(2)	(3)	(4)	(5)	(6)	
ITEM NO.	SMR CODE	FSCM	PART NUMBER	DESCRIPTION AND USABLE ON CODE (UOC)	QTY	
GROUP 2001 CAPSTAN, WINDLASS AND WINCH ASSEMBLY						
FIG. 284 POWER TAKE OFF WINCH ASSEMBLY.						
1	PBFFF	11757	812XKABX-A3XD	POWER TAKEOFF,TRANS	POWER TAKE-OFF	1
2	PAFZZ	11757	378430-10	BOLT,MACHINE		8
3	PAFFF	111757	328274X	CAP,POWER TAKE-OFF		1
4	PAFZZ	90598	A3876	CUP,TAPERED ROLLER		1
5	PAFZZ	11757	22P24-1	GASKET 0.010 IN.THICK,SELECTIVE		2
5	PAFZZ	11757	22P24-2	GASKET 0.020 IN.THICK,SELECTIVE		2
6	PAFZZ	60038	15126	CONE AND ROLERS,TA		2
7	XAFZZ	11757	1P356	HOUSING,PTO		1
8	PAFZZ	11757	68 P 2	PLATE,IDENTIFICATIO		1
9	PAFZZ	45152	802CX252	SCREW,DRIVE		2
10	PAFZZ	45152	2CH411	SCREW,CAP,HEXAGON H	HEAD PART OF	4
11	PAFZZ	45152	352-A	KIT P/N 328170-117X		8
12	PAFZZ	11757	3P706	WASHER,LOCK PART OF KIT P/N 328170-117X		1
13	PAFZZ	11757	500007-29	SHAFT,SHOULDERED		1
14	PAFZZ	72447	500371-4	KEY,WOODRUFF		4
15	PAFZZ	11757	28P52	NUT,PLAIN,HEXAGON PART OF KIT P/N 328170-117X		1
16	PFFFF	11757	328273X	SEAL,OIL		1
17	PAFZZ	90598	A3876	CAP,POWER TAKE-OFF		1
18	PAFZZ	11757	35P15-1	CUP,TAPERED ROLLER		1
18	PAFZZ	11757	35P15-2	GASKET 0.010 IN.THICK,SELECTIVE		1
19	PAFZZ	11757	2P517	GASKET 0.020 IN.THICK,SELECTIVE		1
20	PAFZZ	11757	378496-24	GEAR,SPUR		4
21	KFFZZ	11757	378057	STUD PART OF KIT P/N 328170-117X		2
				PIN,DOWEL PART OF KIT P/N 328170-117X		2

END OF FIGURE



Current part is item (15) on diagram. Available at www.oshkoshequipment.com